

Information Leaflet 2017/001
Internationale Luchthaven Kortrijk Wevelgem

New VFR Traffic Circuits EBKT



BACKGROUND

For the re-introduction of IFR procedures at EBKT, new VFR traffic circuits and procedures have been developed. They are the result of an extensive safety study and inputs from all users at the airport, Belgocontrol and the Belgian CAA.

**The new VFR procedures are effective
as of 09 November 2017!**

THE MOST IMPORTANT CHANGES

What do you have to know as a VFR pilot?

1. The zone around EBKT airport becomes an **RMZ/TMZ**:
All aircraft in the zone around EBKT must have an active transponder (squawk 2000) and must keep 2-way radio communication with Kortrijk Radio.
2. Inbound traffic: enter the RMZ/TMZ via the **Mandatory reporting points** (North, South, West). Proceed to the **Recommended(*) reporting points** (N2,S2,W2) at 1500' MSL (or below) and then join the VFR traffic circuit.
High performance aircraft maintain 2000' until downwind.
3. Traffic circuits:
 - Aircraft < 2T fly a **left hand circuit** at 1000' MSL
 - Helicopters fly a short **right hand circuit** at 1000' MSL
 - High Performance Turbine and Jet aircraft (>2T MTOW) fly a wide circuit at 1500' MSL(**), **always south of the field**. (see charts)
4. In the circuit, report **“LEFT Downwind”** or **“RIGHT Downwind”**, **“LEFT Base”** or **“RIGHT Base”** and **“Final”**. Watch out for IFR traffic on the RNP APCH for RWY 24!
5. Departing flights maintain 1500' MSL or below, **leave via the Recommended reporting points** (N2,E2,S2,W2) and then climb to cruise altitude.

(*): It is recommended to report position at these reporting points (if R/T load permits), but not obligatory.

(**): The height of the High Performance circuit will be changed to 2000' MSL in the near future, together with an AIP update of the VAC charts

For more information:

https://www.belgocontrol.be/opersite/eaip/eAIP_Main/html/eAIP/EB-AD-2.EBKT-en-GB.html

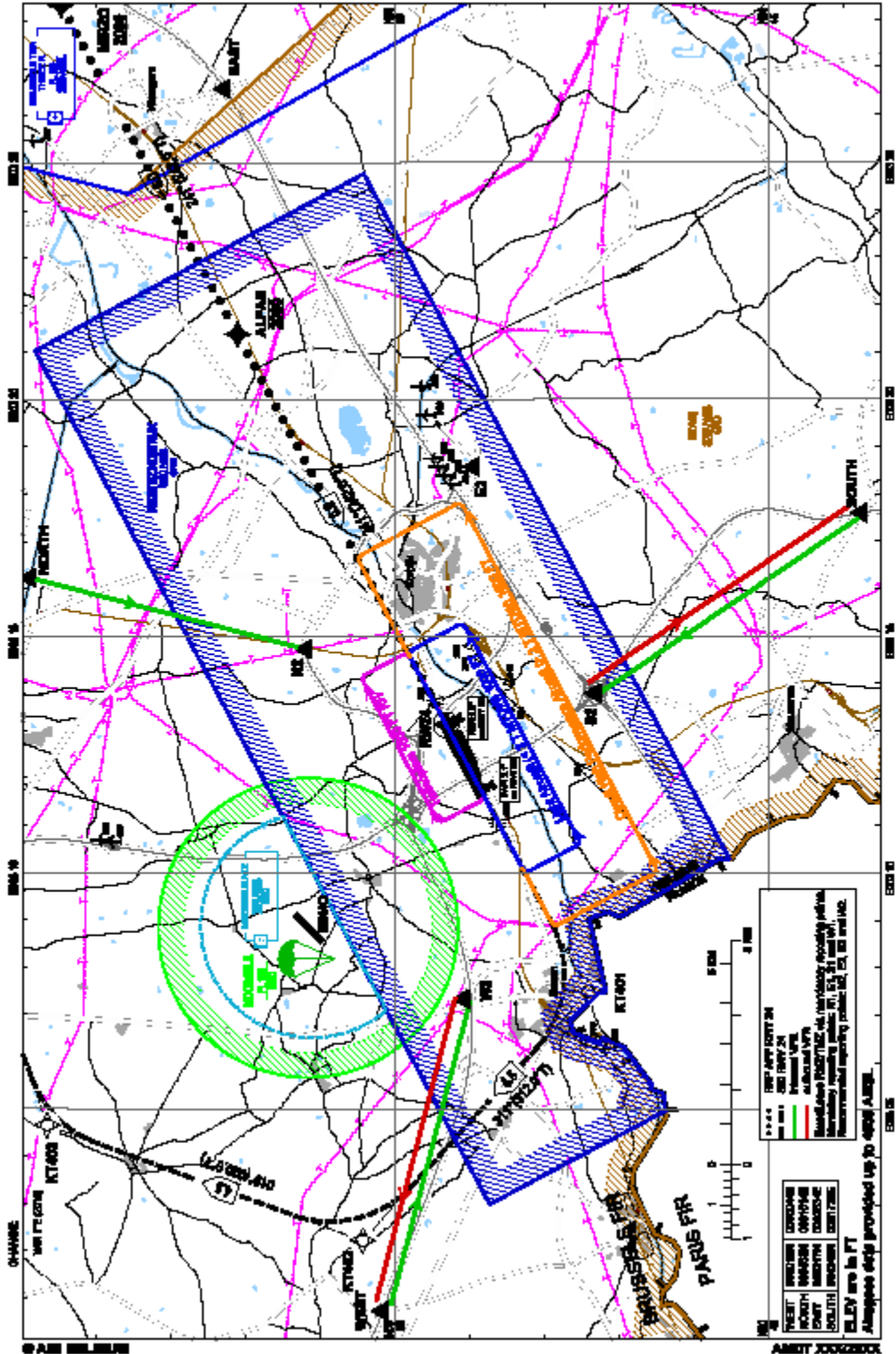
or:

Email: airport.kortrijk@skynet.be

Telephone: +32 (0)56 36 20 43

Visual Approach Chart EBKT RWY 24

Visual Approach = DRAFT = AD ELEV 04
Chart - ICAO = DO NOT USE = (APB-00000) KORTRIJK / Wervelgem (EBKT) RWY 24



Visual Approach Chart EBKT RWY 06

