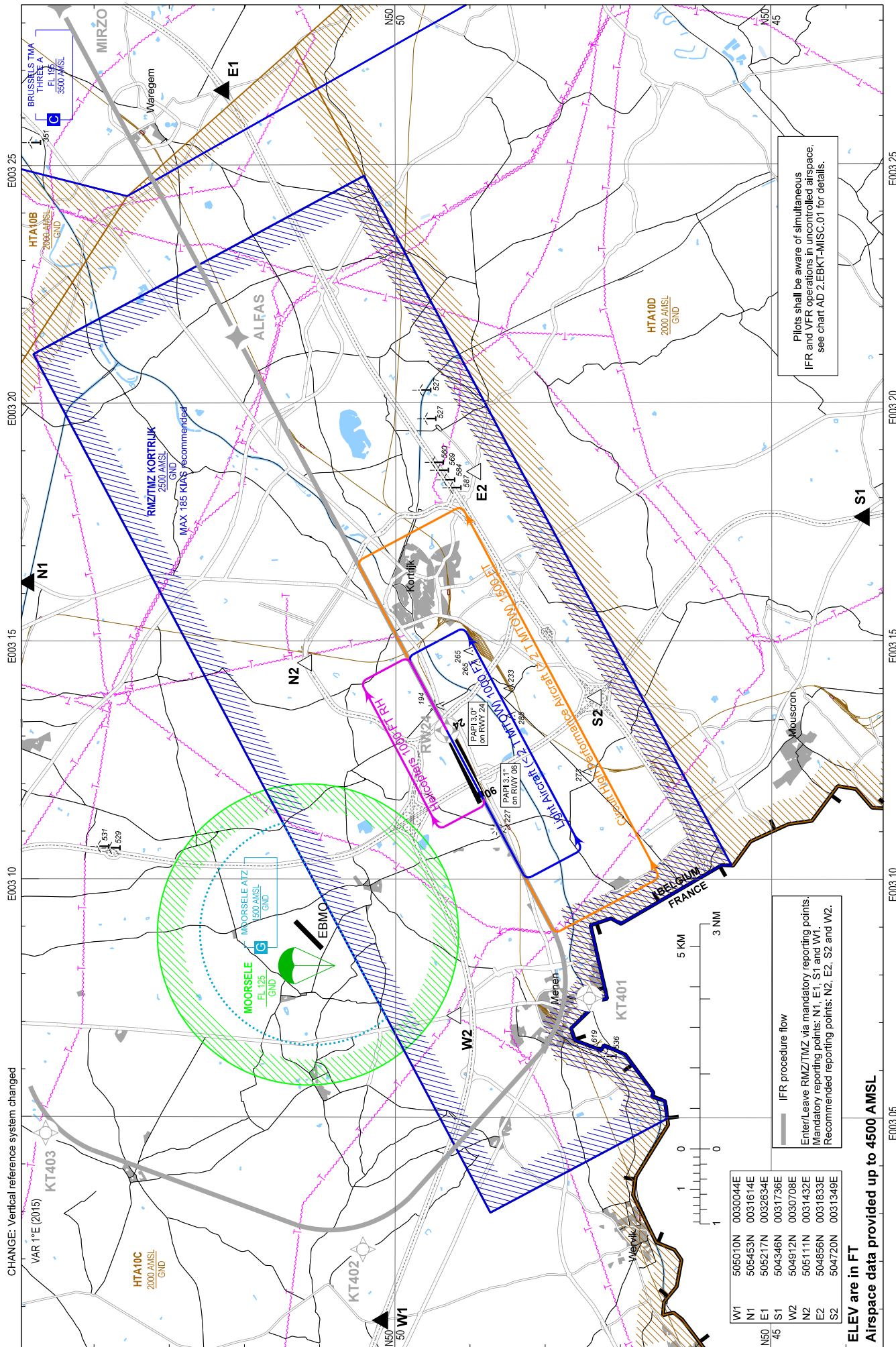


Visual Approach Chart - ICAO

AD ELEV 55
Heights related to AD ELEV

AFIS 120.250

KORTRIJK / Wevelgem (EBKT) RWY 24



Pilots shall be aware of simultaneous IFR and VFR operations in uncontrolled airspace, see chart AD 2.EBKT-MISC.01 for details.

IFR procedure flow
Enter/Leave RMZ/TMZ via mandatory reporting points.
Mandatory reporting points: N1, E1, S1 and W1.
Recommended reporting points: N2, E2, S2 and W2.

W1	505010N	0030044E
W1	505453N	0031614E
W1	505217N	0032634E
E1	504346N	0031736E
E1	504912N	0030708E
E2	505111N	0031432E
E2	504856N	0031833E
S2	504720N	0031349E

CHANGE: Vertical reference system changed
VAR 1°E (2015)

ELEV are in FT
Airspace data provided up to 4500 AMSL